

# FOR LEASE

## SPORTS ARENA OFFICE

**3690 MIDWAY DRIVE**  
SAN DIEGO, CA 92110



## PROPERTY FEATURES

- Excellent location near numerous restaurant & entertainment options
- Convenient access to I-8 & I-5 freeways

## DETAILS

- ±1,200 SF 2<sup>nd</sup> Floor office suite
- Numerous private offices
- Kitchenette
- Two common area restrooms
- Lease Rate: \$1,800/Month + Elec.

### PAT GEARY

Managing Principal - Lic #01703782  
858.737.9837  
pgeary@cegadvisors.com



### DAN GEARY

Vice President - Lic #02052817  
858.737.9838  
dgeary@cegadvisors.com

3709 CONVOY ST, ST 300, SAN DIEGO, CA 92111

All information contained herein has been obtained from sources that we deem reliable, however, no representation or warranty is made to the accuracy thereof.

# FOR LEASE

## SPORTS ARENA OFFICE

# 3690 MIDWAY DRIVE

SAN DIEGO, CA 92110



## PAT GEARY

Managing Principal - Lic #01703782  
858.737.9837  
pgeary@cegadvisors.com



## DAN GEARY

Vice President - Lic #02052817  
858.737.9838  
dgeary@cegadvisors.com

3709 CONVOY ST, ST 300, SAN DIEGO, CA 92111

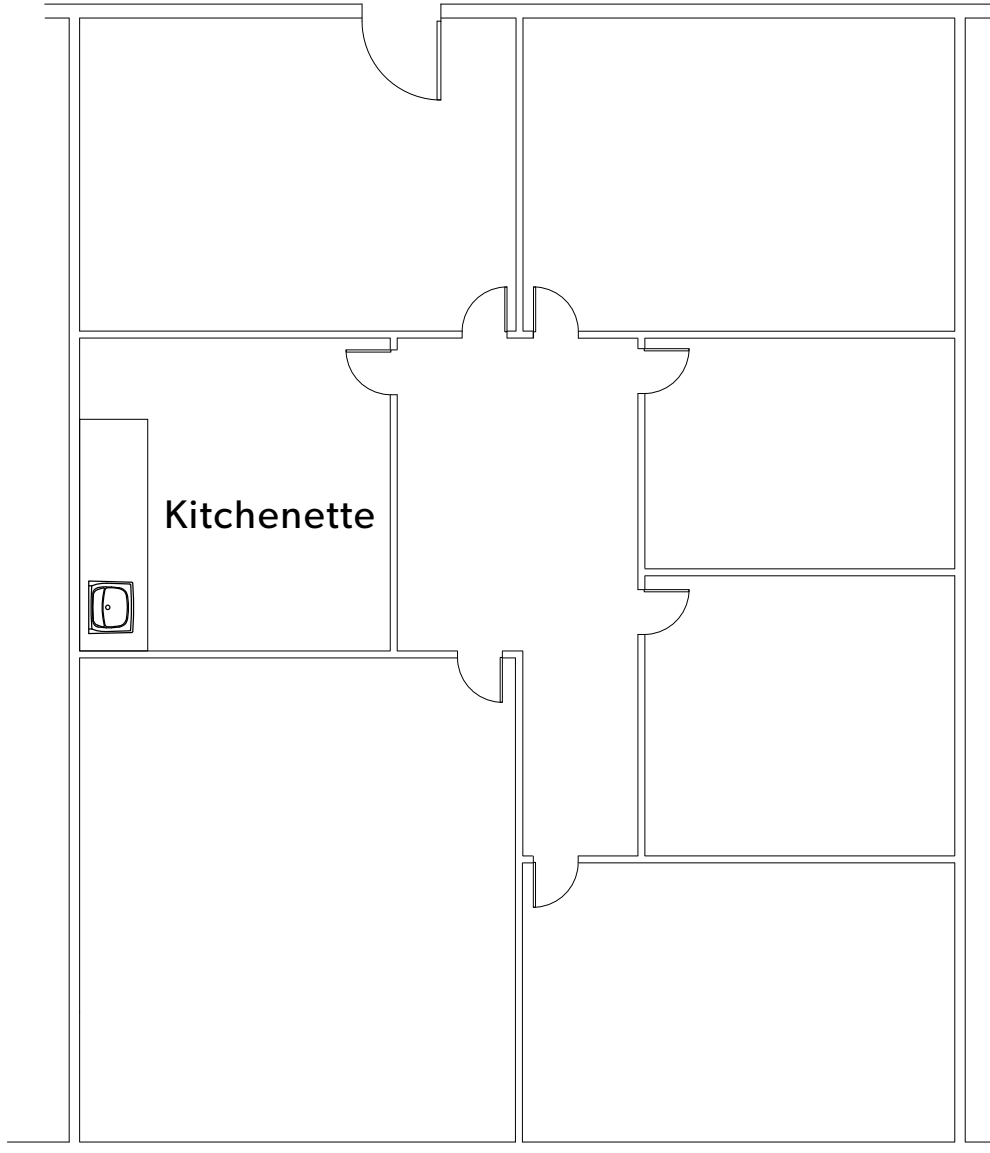
All information contained herein has been obtained from sources that we deem reliable, however, no representation or warranty is made to the accuracy thereof.

# FOR LEASE

SPORTS ARENA OFFICE

**3690 MIDWAY DRIVE**  
SAN DIEGO, CA 92110

## FLOOR PLAN (2nd Floor) SUITE 3690



### **PAT GEARY**

Managing Principal - Lic #01703782  
858.737.9837  
pgeary@cegadvisors.com



### **DAN GEARY**

Vice President - Lic #02052817  
858.737.9838  
dgeary@cegadvisors.com

3709 CONVOY ST, ST 300, SAN DIEGO, CA 92111

All information contained herein has been obtained from sources that we deem reliable, however, no representation or warranty is made to the accuracy thereof.