

# FOR LEASE

±600 SF Office with Visibility

7525 Mission Gorge Road, Suite F, San Diego, CA 92120



## GRANTVILLE/MISSION GORGE SUBMARKET



- » Great location with access to I-8 & I-15
- » Flexible zoning (IL-3-1) allows for a variety of uses
- » Offers street exposure along busy Mission Gorge Rd.
- » Available January 1, 2026
- » Lease Rate: \$1,560/Month - Modified Gross

**Pat Geary**

CalDRE Lic. 01703782

P: 858.737.9837

pgeary@cegadvisors.com



**Dan Geary**

CalDRE Lic. 02052817

P: 858.737.9838

dgeary@cegadvisors.com



# FOR LEASE

±600 SF Office with Visibility

7525 Mission Gorge Road, Suite F, San Diego, CA 92120

## AERIAL LOCATION



- » Ideal small size
- » 100% Office with ±8' ceiling throughout
- » Recent improvements include new flooring and lighting
- » Excellent location
- » Private restroom

**Pat Geary**

CalDRE Lic. 01703782

P: 858.737.9837

pgeary@cegadvisors.com



**Dan Geary**

CalDRE Lic. 02052817

P: 858.737.9838

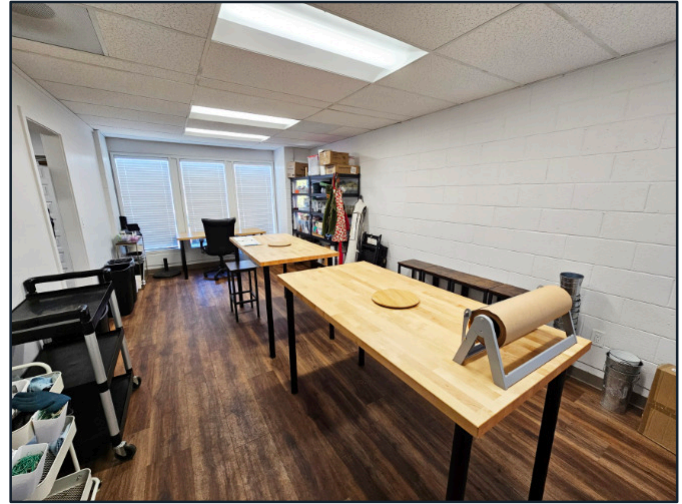
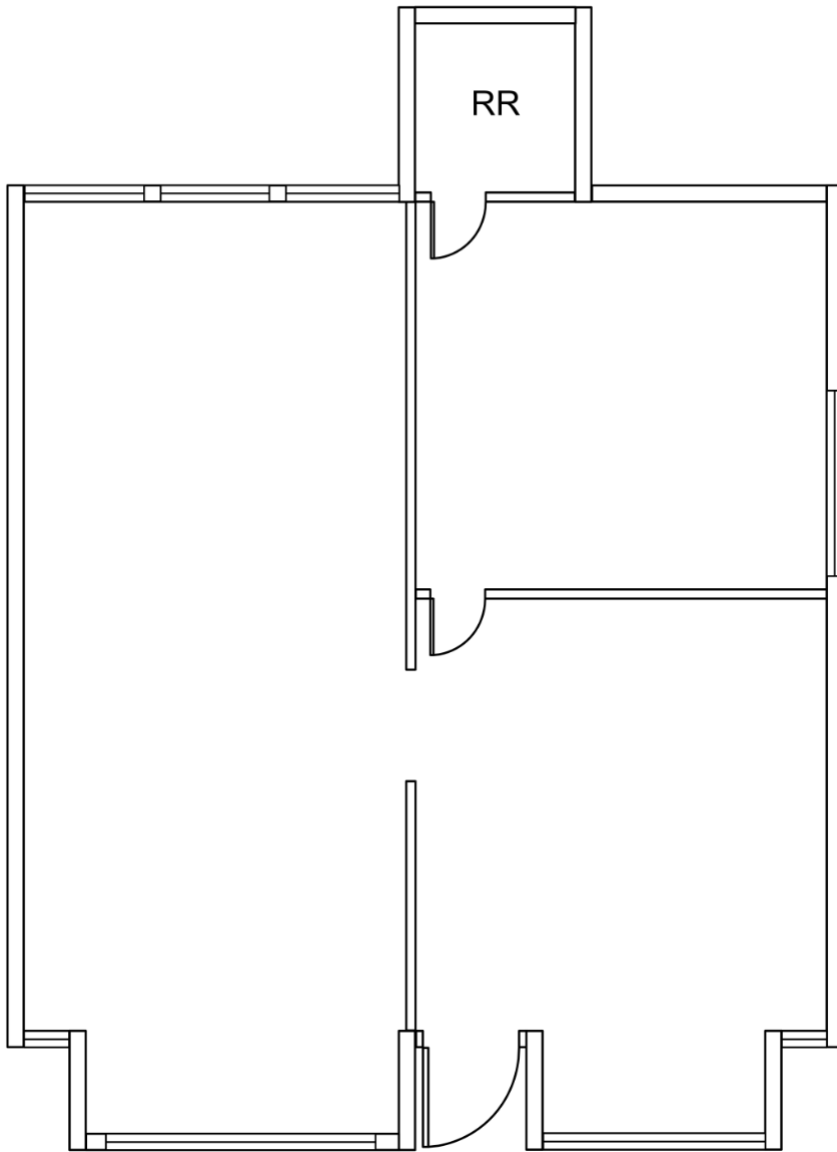
dgeary@cegadvisors.com

# FOR LEASE

±600 SF Office with Visibility

7525 Mission Gorge Road, Suite F, San Diego, CA 92120

## FLOOR PLAN



**Pat Geary**

CalDRE Lic. 01703782

P: 858.737.9837

pgeary@cegadvisors.com



**Dan Geary**

CalDRE Lic. 02052817

P: 858.737.9838

dgeary@cegadvisors.com