

FOR LEASE

KEARNY MESA HIGH VISIBILITY OFFICE

7807 CONVOY COURT
SAN DIEGO, CA 92111



±3,663 RSF First Floor Suite



Pat Geary
President & CEO
Lic. 01703782
858.737.9837
pgeary@cegadvisors.com



TOLLER CORNELL
COMMERCIAL REAL ESTATE

Robbie Cornell
Principal
Lic. 01702034
619.456.2380
robbie@tollercornell.com

All information contained herein has been obtained from sources that we deem reliable, however, no representation or warranty is made to the accuracy thereof.

THE PROPERTY

Ideal Central
Location

Near Numerous
Retail & Restaurants

- » High visibility, elevator-served building at SE corner of Convoy Street & Convoy Court
- » Convenient access to I-805, I-15 and Hwys 52 & 163
- » Zoning: EMX-1 (Employment Mixed-Use) [\[City of San Diego link\]](#)
Flexible zoning allows for variety of uses including Medical Office, Office, Retail and some Light Industrial
- » Parking Ratio: 3.3/1,000 USF

7807
CONVOY COURT



AVAILABILITY

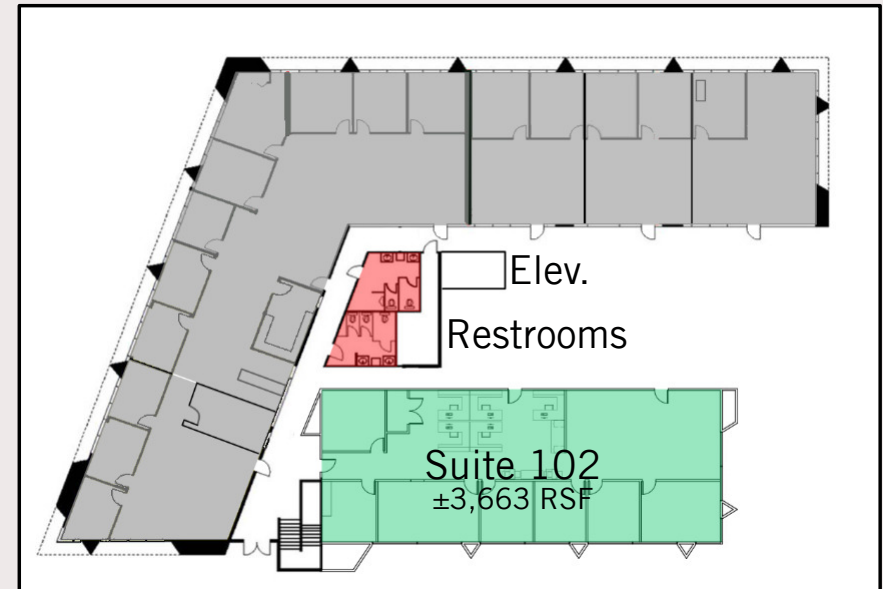
Suite 102

- » ±3,663 RSF
- » Multiple private offices, open bullpen area, conference room & kitchenette
- » Available May 15th
- » Lease Rate: \$2.25/SF + Elec.

**Do not disturb tenants; contact agents for details or tour instructions*



FIRST FLOOR



SECOND FLOOR



LOCATION & AREA RETAIL

7807
CONVOY COURT

